

# Cute Little Squirrel Feeder Kit

Cedar  Pine

A great project for nature lovers of any age.



**Good Planet**  
Love it or leave it.  
Made in the USA

Available at: J.J. Cardinal's Wild Bird & Nature Store®  
Grand Blanc, MI ~ [www.jjcardinal.com](http://www.jjcardinal.com) ~ 810-695-8733  
Customer Service & Orders: (toll free) 1-866-818-6295

# Cute Little Squirrel Feeder Kit

Cedar  Pine

A great project for nature lovers of any age.



**Good Planet**  
Love it or leave it.  
Made in the USA

Available at: J.J. Cardinal's Wild Bird & Nature Store®  
Grand Blanc, MI ~ [www.jjcardinal.com](http://www.jjcardinal.com) ~ 810-695-8733  
Customer Service & Orders: (toll free) 1-866-818-6295

# Cute Little Squirrel Feeder Kit

Cedar  Pine

A great project for nature lovers of any age.



**Good Planet**  
Love it or leave it.  
Made in the USA

Available at: J.J. Cardinal's Wild Bird & Nature Store®  
Grand Blanc, MI ~ [www.jjcardinal.com](http://www.jjcardinal.com) ~ 810-695-8733  
Customer Service & Orders: (toll free) 1-866-818-6295

# Cute Little Squirrel Feeder Kit

Cedar  Pine

A great project for nature lovers of any age.

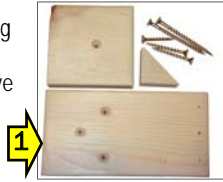


**Good Planet**  
Love it or leave it.  
Made in the USA

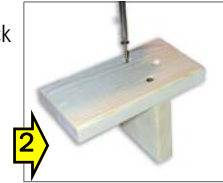
Available at: J.J. Cardinal's Wild Bird & Nature Store®  
Grand Blanc, MI ~ [www.jjcardinal.com](http://www.jjcardinal.com) ~ 810-695-8733  
Customer Service & Orders: (toll free) 1-866-818-6295

## Assembly Guide

**Step 1:** Review parts & the assembly steps below by placing all the pieces together without use of screws to familiarize yourself with each piece and it's orientation. You should have 3 wood parts: a large back panel, smaller corn cob base, a support block, & 5 screws. (Yep, you will need a Philips-head screwdriver to complete this project.)



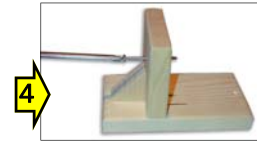
**Step 2:** attach corn cob base with 2 screws (1-5/8") thru back panel. Notice, the hole in cob base. The side with counter sunk hole should be facing "down".



**Step 3:** To attach the support block under the corn cob case flip the feeder on it's side. Hold the support block under the corn cob base and insert the small 1-1/4" screw thru the back into the block. OK, you're nearly done. Fun, huh?



**Step 4:** Insert on long 2" screw thru the bottom of the corn cob base. Alrighty - you've done it! How cool is that? Now the feeder is ready to hang using a 2" screw on a tree, deck, fence or other place. Good job.



**GoodPlanet™**  
Love it or leave it.  
Made in the USA

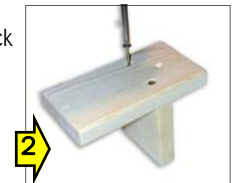
Available at: J.J. Cardinal's Wild Bird & Nature Store®  
Grand Blanc, MI ~ [www.jjcardinal.com](http://www.jjcardinal.com) ~ 810-695-8733  
Customer Service & Orders: (toll free) 1-866-818-6295

## Assembly Guide

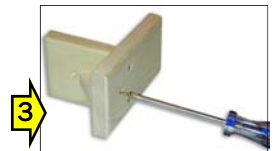
**Step 1:** Review parts & the assembly steps below by placing all the pieces together without use of screws to familiarize yourself with each piece and it's orientation. You should have 3 wood parts: a large back panel, smaller corn cob base, a support block, & 5 screws. (Yep, you will need a Philips-head screwdriver to complete this project.)



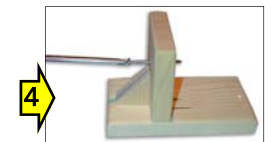
**Step 2:** attach corn cob base with 2 screws (1-5/8") thru back panel. Notice, the hole in cob base. The side with counter sunk hole should be facing "down".



**Step 3:** To attach the support block under the corn cob case flip the feeder on it's side. Hold the support block under the corn cob base and insert the small 1-1/4" screw thru the back into the block. OK, you're nearly done. Fun, huh?



**Step 4:** Insert on long 2" screw thru the bottom of the corn cob base. Alrighty - you've done it! How cool is that? Now the feeder is ready to hang using a 2" screw on a tree, deck, fence or other place. Good job.

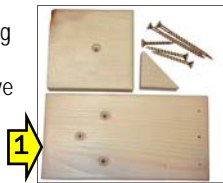


**GoodPlanet™**  
Love it or leave it.  
Made in the USA

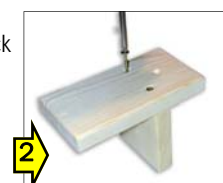
Available at: J.J. Cardinal's Wild Bird & Nature Store®  
Grand Blanc, MI ~ [www.jjcardinal.com](http://www.jjcardinal.com) ~ 810-695-8733  
Customer Service & Orders: (toll free) 1-866-818-6295

## Assembly Guide

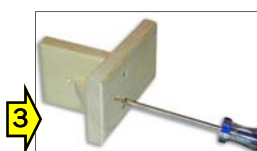
**Step 1:** Review parts & the assembly steps below by placing all the pieces together without use of screws to familiarize yourself with each piece and it's orientation. You should have 3 wood parts: a large back panel, smaller corn cob base, a support block, & 5 screws. (Yep, you will need a Philips-head screwdriver to complete this project.)



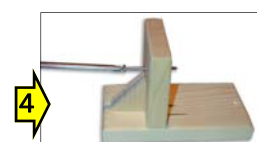
**Step 2:** attach corn cob base with 2 screws (1-5/8") thru back panel. Notice, the hole in cob base. The side with counter sunk hole should be facing "down".



**Step 3:** To attach the support block under the corn cob case flip the feeder on it's side. Hold the support block under the corn cob base and insert the small 1-1/4" screw thru the back into the block. OK, you're nearly done. Fun, huh?



**Step 4:** Insert on long 2" screw thru the bottom of the corn cob base. Alrighty - you've done it! How cool is that? Now the feeder is ready to hang using a 2" screw on a tree, deck, fence or other place. Good job.



**GoodPlanet™**  
Love it or leave it.  
Made in the USA

Available at: J.J. Cardinal's Wild Bird & Nature Store®  
Grand Blanc, MI ~ [www.jjcardinal.com](http://www.jjcardinal.com) ~ 810-695-8733  
Customer Service & Orders: (toll free) 1-866-818-6295

## Assembly Guide

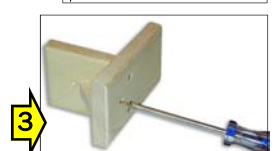
**Step 1:** Review parts & the assembly steps below by placing all the pieces together without use of screws to familiarize yourself with each piece and it's orientation. You should have 3 wood parts: a large back panel, smaller corn cob base, a support block, & 5 screws. (Yep, you will need a Philips-head screwdriver to complete this project.)



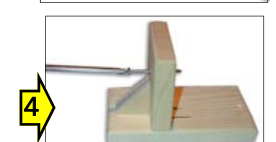
**Step 2:** attach corn cob base with 2 screws (1-5/8") thru back panel. Notice, the hole in cob base. The side with counter sunk hole should be facing "down".



**Step 3:** To attach the support block under the corn cob case flip the feeder on it's side. Hold the support block under the corn cob base and insert the small 1-1/4" screw thru the back into the block. OK, you're nearly done. Fun, huh?



**Step 4:** Insert on long 2" screw thru the bottom of the corn cob base. Alrighty - you've done it! How cool is that? Now the feeder is ready to hang using a 2" screw on a tree, deck, fence or other place. Good job.



**GoodPlanet™**  
Love it or leave it.  
Made in the USA

Available at: J.J. Cardinal's Wild Bird & Nature Store®  
Grand Blanc, MI ~ [www.jjcardinal.com](http://www.jjcardinal.com) ~ 810-695-8733  
Customer Service & Orders: (toll free) 1-866-818-6295